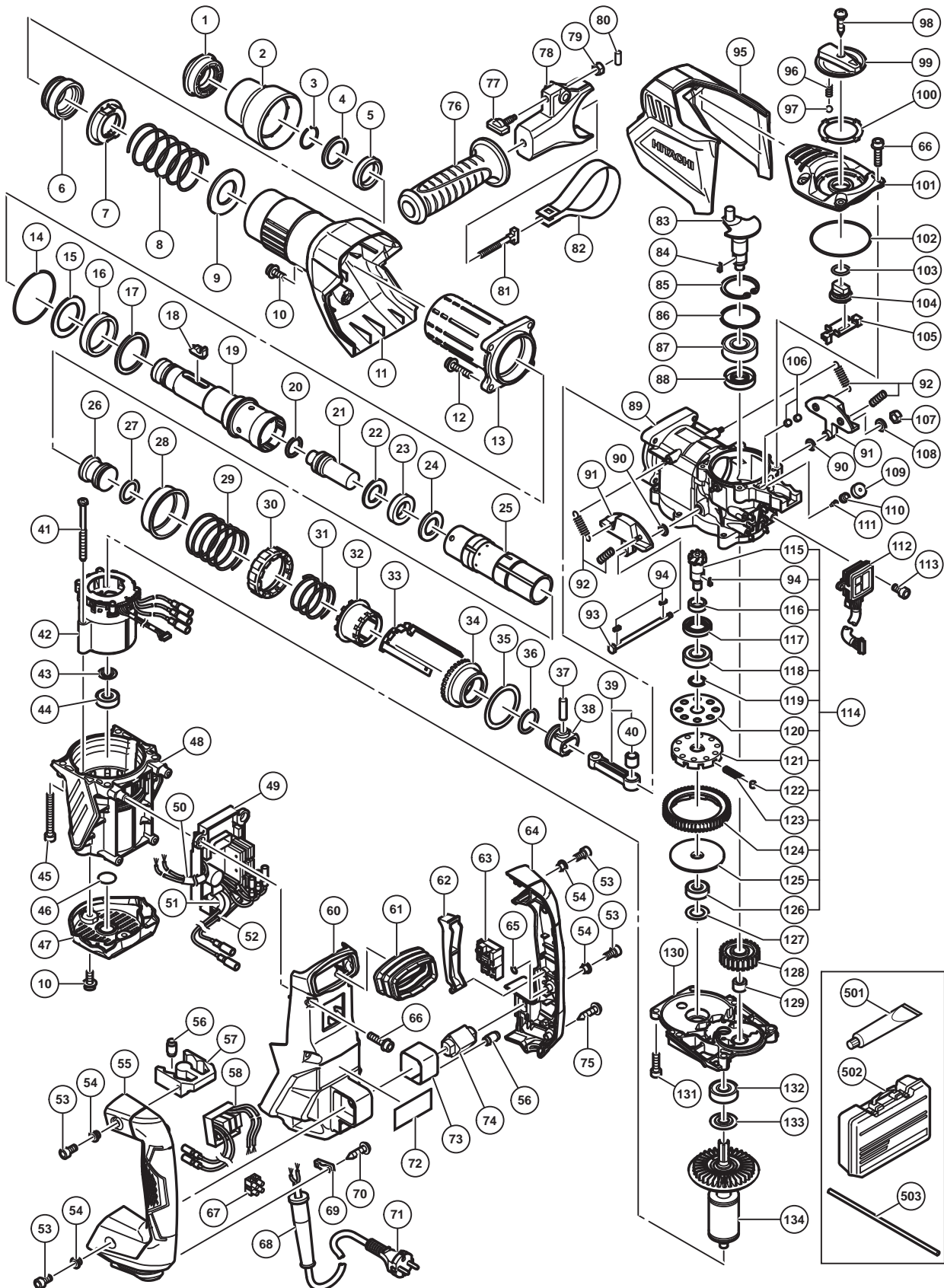


ELECTRIC TOOL PARTS LIST

HAMMER DRILL Model DH 40MEY

2014-12-23
(E1)



PARTS

DH 40MEY

ITEM NO.	CODE NO.	DESCRIPTION	NO. USED	REMARKS
1	337562	FRONT CAP	1	
2	337560	GRIP	1	
3	318590	STOPPER RING	1	
4	337561	RETAINER WASHER	1	
5	337559	RETAINER DAMPER (A)	1	
6	337558	BIT LOCK HOLDER	1	
7	337555	THRUST PLATE	1	
8	337556	RETAINER SPRING	1	
9	337557	SPRING HOLDER (A)	1	
10	998471	HEX. SOCKET HD. BOLT (W/FLANGE) M5 X 12	3	
11	337553	CYLINDER CASE COVER	1	
12	991712	HEX. SOCKET HD. BOLT (W/FLANGE) M6 X 25	4	
13	337552	CYLINDER CASE	1	
14	956996	O-RING (1AS-60)	1	
15	337549	RETAINER DAMPER HOLDER	1	
16	337548	RETAINER DAMPER (B)	1	
17	337547	RETAINER DAMPER WASHER	1	
18	337554	BIT LOCK	2	
19	337536	RETAINER SLEEVE	1	
20	313396	O-RING (C)	1	
21	337537	SECOND HAMMER	1	
22	337538	DAMPER WASHER	1	
23	321835	DAMPER	1	
24	337539	DAMPER HOLDER	1	
25	337540	CYLINDER	1	
26	337541	STRIKER	1	
27	986104	O-RING	1	
28	337550	SPRING HOLDER (B)	1	
29	337551	LOCK SPRING	1	
30	331535	LOCK SLEEVE	1	
31	337542	CLUTCH SPRING	1	
32	337543	CLUTCH	1	
33	337544	SLIDER	1	
34	337545	BEVEL GEAR	1	
35	337546	THRUST WASHER	1	
36	986104	O-RING	1	
37	980708	PISTON PIN	1	
38	326369	PISTON	1	
39	337535	CONNECTING ROD ASS'Y	1	INCLUD.40
40	335303	NEEDLE BEARING	1	
41	953174	HEX. HD. TAPPING SCREW D5 X 55	2	
* 42	340884	STATOR SENSOR PCB SET 100V-127V	1	
* 42	340885E	STATOR SENSOR PCB SET 220V-240V	1	
43	958915	WASHER (A)	1	
44	629VVM	BALL BEARING 629VVC2PS2L	1	
45	986940	SEAL LOCK HEX. SOCKET HD. BOLT M6 X 45	4	
46	333263	DUST SEAL	1	
47	337584	TAIL COVER	1	
48	337582	HOUSING	1	
* 49	337579	CONTROLLER SET 100V-127V	1	

PARTS

DH 40MEY

ITEM NO.	CODE NO.	DESCRIPTION	NO. USED	REMARKS
* 49	337580	CONTROLLER SET 220V-240V	1	
50	322530	VINYL TUBE L55	1	
51	322530	VINYL TUBE L55	1	
52	321322	VINYL TUBE L35	1	
53	991690	SEAL LOCK HEX. SOCKET HD. BOLT M5 X 12	4	
54	991711	DISTANCE PIECE (B)	4	
55	337590	HANDLE (B)	1	
56	310124	HANDLE DAMPER	8	
57	310123	TRANSATORY UNIT	1	
* 58	337585	FILTER PCB SET 100V-127V	1	
* 58	337586	FILTER PCB SET 220V-240V	1	
60	337573	BACK COVER	1	
61	337591	BELLOWS	1	
62	337588	TRIGGER	1	
63	337587	SWITCH	1	
64	337589	HANDLE (A)	1	
65	320218	O-RING	1	
66	994192	HEX. SOCKET HD. BOLT (W/FLANGE) M5 X 16	10	
67	958308Z	PILLAR TERMINAL (A)	1	
* 68	958049	CORD ARMOR D8.2	1	
* 68	940778	CORD ARMOR D10.7	1	
69	960266	CORD CLIP	1	
70	984750	TAPPING SCREW (W/FLANGE) D4 X 16	2	
* 71	500390Z	CORD	1	(CORD ARMOR D10.7)
* 71	500434Z	CORD	1	(CORD ARMOR D10.7) FOR USA,CAN,MEX
* 71	500446Z	CORD	1	(CORD ARMOR D10.7) FOR GBR (230V)
* 71	500465Z	CORD	1	(CORD ARMOR D10.7) FOR GBR (110V)
* 71	500439Z	CORD	1	(CORD ARMOR D8.2) FOR AUS
* 71	500408Z	CORD	1	(CORD ARMOR D8.2) FOR NZL
* 71	500235Z	CORD	1	(CORD ARMOR D8.2) FOR INA
* 71	500424Z	CORD	1	(CORD ARMOR D8.2) FOR MAL
72		NAME PLATE	1	
73	337574	HOLDER	1	
74	326377	HANDLE SHAFT	1	
75	301653	TAPPING SCREW (W/FLANGE) D4 X 20 (BLACK)	3	
76	330209	SIDE HANDLE	1	
77	337577	WING BOLT	1	
78	337576	MOUNT	1	
79	949556	NUT M6 (10 PCS.)	1	
80	949859	ROLL PIN D2 X 8 (10 PCS.)	1	
81	331247	HANDLE BOLT	1	
82	337575	BAND	1	
83	337531	CRANK SHAFT	1	
84	940533	FEATHER KEY 3 X 3 X 10	1	
85	948391	RETAINING RING FOR D40 HOLE	1	
86	996363	O-RING (S-40)	1	
87	6203DD	BALL BEARING 6203DDCMPS2L	1	
88	321274	OIL SEAL (B)	1	
89	337530	CRANK CASE	1	
90	337571	WASHER	2	

