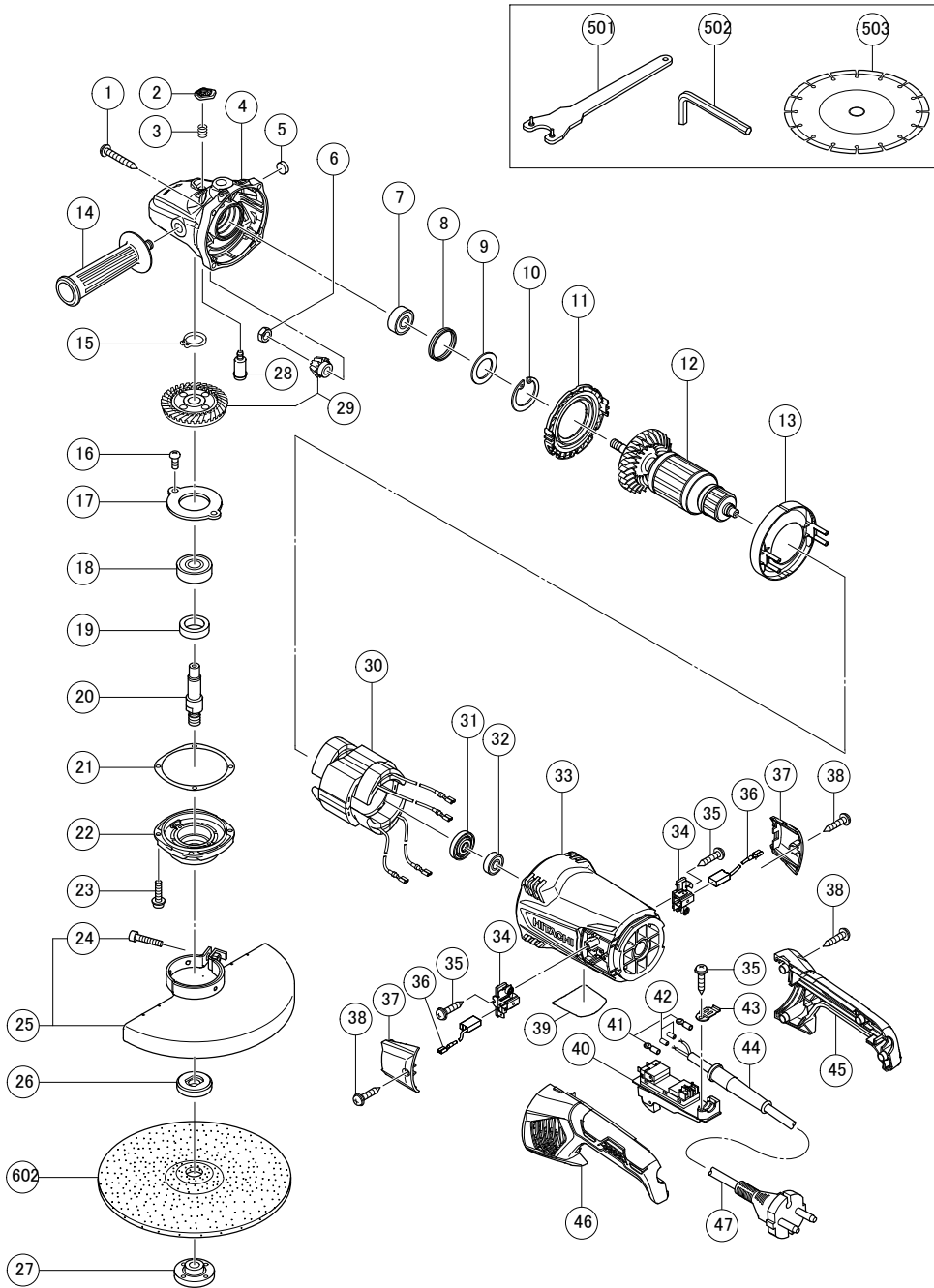


DISC GRINDER G 23ST

Page:1/1



Rev.1

形名
G23ST

DISC GRINDER G 23ST

Item No.	Code No.	Description	No. used	Remarks
1	323209	TAPPING SCREW (W/FLANGE) D5X35 (BLACK)	4	
2	337641	PUSHING BUTTON	1	
3	320219	SPRING	1	
4	337650	GEAR COVER ASS'Y	1	INCLUD.2,3,5,7-10,28
5	937033	FELT WASHER	1	
6	320226	SPECIAL NUT M10	1	
7	6301VV	BALL BEARING 6301VVCMP2L	1	
8	330031	RUBBER RING	1	
9	337642	WASHER	1	
10	948391	RETAINING RING FOR D40 HOLE	1	
11	337640	FAN GUIDE (B)	1	
*12	360982C	ARMATURE 110V	1	
*12	360982D	ARMATURE 120V-127V	1	
*12	360982U	ARMATURE ASS'Y 120V	1	INCLUD.31,32
*12	360982E	ARMATURE 220V-230V	1	
*12	360982F	ARMATURE 240V	1	
13	337639	FAN GUIDE (A)	1	
14	937981	SIDE HANDLE FOR M14	1	
15	939542	RETAINING RING FOR D12 SHAFT (10 PCS.)	1	
16	949236	MACHINE SCREW M5X10 (10 PCS.)	2	
17	320229	BEARING COVER (B)	1	
18	6302VV	BALL BEARING 6302VVCMP2L	1	
19	990852	FELT PACKING (B)	1	
*20	320234	SPINDLE	1	
*20	321541	SPINDLE	1	FOR USA,CAN,PAN (120V)
21	320228	SEAL PLATE	1	
22	320227	PACKING GLAND	1	
23	994192	HEX. SOCKET HD. BOLT (W/FLANGE) M5X16	4	
24	949760	HEX. SOCKET HD. BOLT M8X25 (10 PCS.)	1	
*25	338292	WHEEL GUARD ASS'Y	1	INCLUD.24
*25	338294	WHEEL GUARD ASS'Y	1	INCLUD.24 FOR USA,CAN,PAN (120V)
*25	338293	WHEEL GUARD ASS'Y	1	INCLUD.24 FOR USA,CAN
*26	937907Z	WHEEL WASHER (C)	1	
*26	334456	WHEEL WASHER (C)	1	FOR USA,CAN
*27	937909Z	WHEEL NUT M14X2	1	
*27	937923P	WHEEL NUT 5/8"-11UNC	1	FOR USA,CAN,PAN (120V)
28	306890	LOCK PIN	1	
29	330688	GEAR AND PINION SET	1	
*30	340888C	STATOR 110V	1	
*30	340888D	STATOR 120V-127V	1	
*30	340888E	STATOR 220V-230V	1	
*30	340888F	STATOR 240V	1	
31	330029	DUST SEAL	1	
32	6000VV	BALL BEARING 6000VVCMP2L	1	
*33	337643	HOUSING	1	
*33	338296	HOUSING	1	FOR FRA
34	337646	BRUSH HOLDER	2	
35	984750	TAPPING SCREW (W/FLANGE) D4X16	3	
*36	999059	CARBON BRUSH (1 PAIR)	2	
*36	999059	CARBON BRUSH (1 PAIR)	1	FOR BRA
*36	999093	CARBON BRUSH (AUTO STOP TYPE) (1 PAIR)	1	FOR BRA
37	337649	BRUSH COVER	2	
38	305812	TAPPING SCREW (W/FLANGE) D4X16 (BLACK)	6	
39		NAME PLATE	1	
*40	320239	SWITCH (2P PILLAR TYPE) W/SAFETY LOCK	1	OFF/ON LOCK
*40	320238	SWITCH (2P PILLAR TYPE) W/SAFETY LOCK	1	OFF/LOCK
*40	338295	SWITCH (2P PILLAR TYPE) W/SAFETY LOCK	1	OFF/LOCK FOR GBR (110V)
41	930804	TERMINAL M4.0 (10 PCS.)	2	FOR USA,CAN
*42	981373	TUBE (D)	2	
*42	961820	TUBE (D)	2	FOR GBR (110V)
43	331336	CORD CLIP	1	
*44	958049	CORD ARMOR D8.2	1	
*44	940778	CORD ARMOR D10.7	1	
*44	337918	CORD ARMOR D11.6	1	
45	337645	HANDLE (B)	1	
46	337644	HANDLE (A)	1	
*47	500492Z	CORD	1	(CORD ARMOR D10.7)
*47	500493Z	CORD	1	(CORD ARMOR D8.2) FOR VIE,INA,IND, PAN (220V)
*47	500435Z	CORD	1	(CORD ARMOR D8.2) FOR SIN (230V),MAL,HKG
*47	500496Z	CORD	1	(CORD ARMOR D10.7) FOR VIE,THA
*47	500497Z	CORD	1	(CORD ARMOR D10.7) FOR AUS,NZL
*47	500453Z	CORD	1	(CORD ARMOR D10.7) FOR USA,CAN
*47	500494Z	CORD	1	(CORD ARMOR D10.7) FOR GBR (230V)
*47	500495Z	CORD	1	(CORD ARMOR D11.6) FOR GBR (110V)

Item No.	Code No.	Description	No. used	Remarks
*47	500453Z	CORD	1	(CORD ARMOR D10.7) FOR PAN (120V)
*47	500474Z	CORD	1	(CORD ARMOR D10.7) FOR SIN (110V)
*47	500487Z	CORD	1	(CORD ARMOR D8.2) FOR BRA
		STANDARD ACCESSORIES		
501	325491	WRENCH	1	
502	872422	HEX. BAR WRENCH 6MM	1	
503		DIAMOND CUTTER 230MM-D22.2 HOLE	1	
				FOR EUROPE,RUS SUPPLIED WITH ITEM NO.601
		OPTIONAL ACCESSORIES		
601	994275	DIAMOND WHEEL (SEGMENT) 230MM-D22.2 HOLE	1	FOR EUROPE,RUS
602	316825	D. C. WHEELS 230MM A24R (25 PCS.)	1	
603	310337	SUPER WASHER	1	
604	323993	PIPE HANDLE SET	1	INCLUD.605
605	985597	BOLT M14	2	
606	332797	WHEEL GUARD (FOR CUTTING)	1	
607	316824	D. C. WHEELS 180MM A24R (25 PCS.)	1	FOR USA,CAN
608	332795	WHEEL GUARD BASE SET	1	WITH BASE FOOT FOR USA,CAN
609	332796	WHEEL GUARD (FOR CUTTING)	1	WITHOUT BASE FOOT FOR USA,CAN