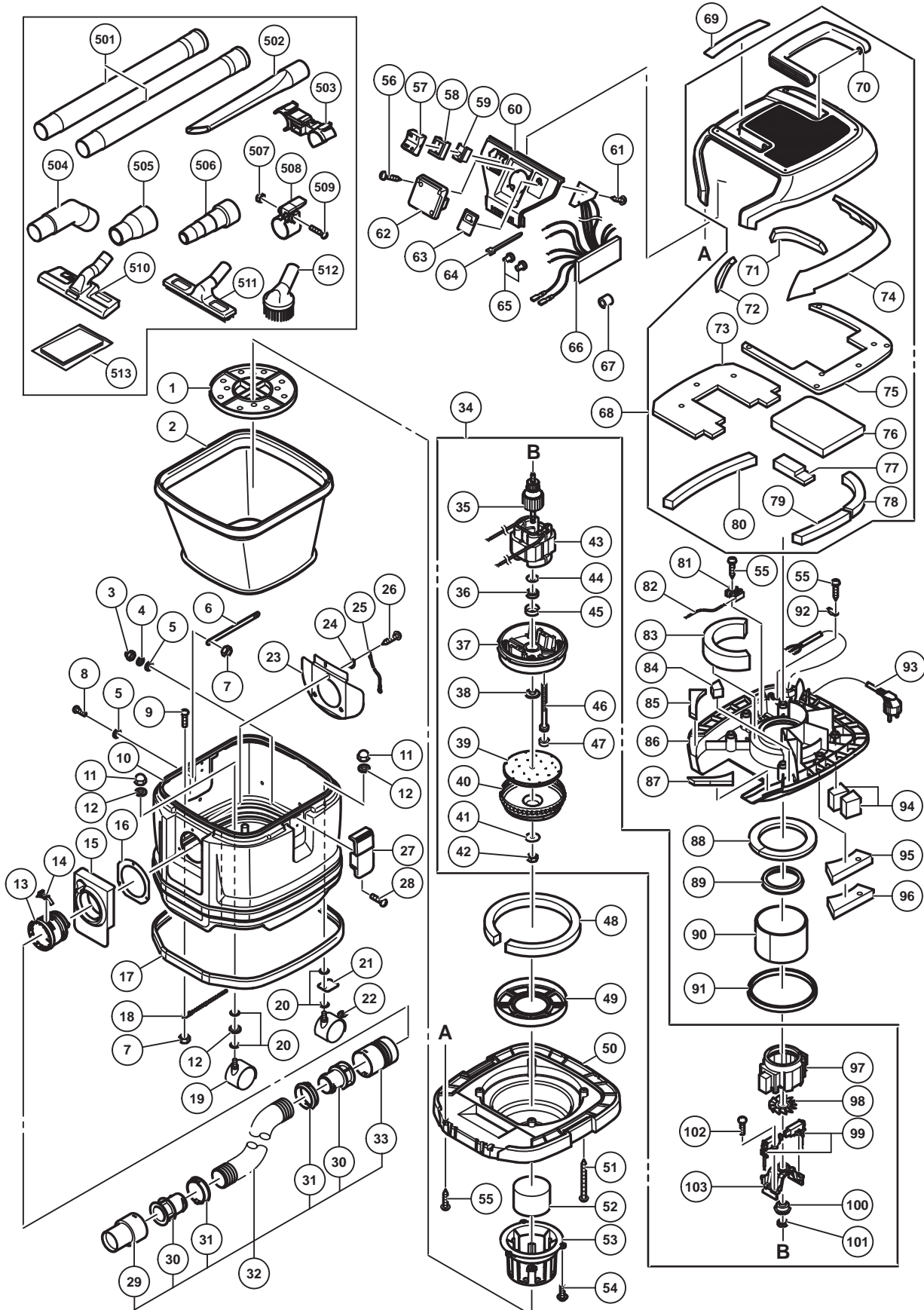


ELECTRIC TOOL PARTS LIST

■ DUST COLLECTOR Model RP 150YB

2015 · 2 · 10
(E1)



PARTS

RP 150YB

ITEM NO.	CODE NO.	DESCRIPTION	NO. USED	REMARKS
1	330599	FILTER CAGE	1	
2	337458	DRY DUST FILTER (8L·15L W/WET AND DRY)	1	
3	311839	HEX. CAP NUT M4	4	
4	949453	SPRING WASHER M4 (10 PCS.)	4	
5	949423	WASHER M4 (10 PCS.)	8	
6	338577	TANK STAY 15L (B)	2	
7	949554	NUT M4 (10 PCS.)	5	
8	949217	MACHINE SCREW M4 X 12 (10 PCS.)	4	
9	949218	MACHINE SCREW M4 X 14 (10 PCS.)	1	
10	338479	TANK ASS'Y (15L)	1	INCLUD.5-8,11,12,19-22
11	975597	CAP NUT M8	4	
12	949433	BOLT WASHER M8 (10 PCS.)	6	
13	337451	HOSE JOINT	1	
14	321014	HOSE STOPPER	1	
15	337449	JOINT COVER (A)	1	
16	337448	JOINT COVER PACKING	1	
17	337446	BUMPER	1	
18	329872	EARTH CHAIN	1	
19	337438	CASTER (D50)	2	
20	338453	RUBBER WASHER	8	
21	338480	CASTER WASHER	2	
22	337439	CASTER (D50 WITH STOPPER)	2	
23	337452	POLY GUIDE (A)	1	
24	337454	EARTH PLATE	1	
25	338481	INTERNAL WIRE (D)	1	
26	307028	TAPPING SCREW (W/FLANGE) D4 X 25 (BLACK)	3	
27	337455	CLAMP LEVER	2	
28	949219	MACHINE SCREW M4 X 16 (10 PCS.)	4	
29	320986	SLEEVE (B) ID38	1	
30	337512	SCREW RING (ID 38)	2	
31	321066	CLICK RING	2	
32	337513	HOSE ASS'Y ID38	1	INCLUD.29-31,33
33	320985	SLEEVE (A) ID38	1	
34	337472	MOTOR ASS'Y	1	INCLUD.35-47,97-103
35		ARMATURE 230V	1	
36		BALL BEARING 608VVC	1	
37		MOTOR BASE	1	
38		FLANGE WASHER	1	
39		FAN	1	
40		CASING	1	
41		SPECIAL WASHER	1	
42		LOCK NUT M8	1	
43		STATOR 230V	1	
44		PRESS PLATE	1	
45		BEARING HOLDER (B)	1	
46		BOLT (W/WASHER) M5 X 60	2	
47		RUBBER COVER	2	
48	337477	SILENT FILTER (C)	1	
49	334977	SUPPORT RING (B)	1	
50	337467	MOTOR BASE (A)	1	

PARTS

RP 150YB

ITEM NO.	CODE NO.	DESCRIPTION	NO. USED	REMARKS
51	301815	TAPPING SCREW (W/FLANGE) D4 X 45 (BLACK)	4	
52	338455	FLOAT	1	
53	337456	FLOAT HOLDER (A)	1	
54	994810	SCREW (PLASTIC TIE) D4 X 16	3	
55	301653	TAPPING SCREW (W/FLANGE) D4 X 20 (BLACK)	5	
56	313687	TAPPING SCREW (W/FLANGE) D3 X 16 (BLACK)	2	
57	337502	SWITCH COVER	1	
58	337503	SWITCH PACKING	1	
59	338471	SWITCH (B)	1	
60	337495	SWITCH HOLDER (D)	1	
61		TAPPING SCREW (W/FLANGE) D3 X 12	2	
62	328685	RECEPTACLE	1	
63	337498	PANEL SHEET (C)	1	
64	975144	CABLE TIE	1	
65	959141	CONNECTOR 50092 (10 PCS.)	2	
66	337481	CONTROLLER	1	
67	329755	FERRITE CORE	1	
68	338259	HEAD COVER ASS'Y	1	INCLUD.70-80
69		NAME PLATE	1	
70	337505	HANDLE	1	
71	337508	HEAD COVER PACKING (C)	1	
72	338457	HEAD COVER PACKING (F)	1	
73	337509	HEAD COVER PACKING (D)	1	
74	337507	HEAD COVER PACKING (B)	1	
75	337506	HEAD COVER PACKING (A)	1	
76	338458	HEAD COVER PACKING (E)	1	
77	338459	SILENT FILTER (E)	1	
78	338460	SILENT FILTER (D)	1	
79	338461	SILENT FILTER (F)	1	
80	337478	SILENT FILTER (D)	1	
81	321041	TERMINAL PLATE	1	
82	338482	INTERNAL WIRE	1	
83	338462	SILENT FILTER (G)	1	
84	338464	SILENT FILTER (M)	1	
85	338466	MOTOR COVER PACKING (A)	1	
86	337474	MOTOR COVER	1	
87	338465	MOTOR COVER PACKING (A)	1	
88	338463	SILENT FILTER (G)	1	
89	325876	SUPPORT RING (A)	1	
90	337476	SILENT FILTER (B)	1	
91	338467	MOTOR PACKING (A)	1	
92	995063	CORD CLIP	1	
93	500479Z	CORD	1	
94	338468	SILENT FILTER (L)	2	
95	338469	SILENT FILTER (K)	1	
96	338470	SILENT FILTER (K)	1	
97		FAN COVER	1	
98		COOLING FAN	1	
99		CARBON BRUSH (1 PAIR)	2	
100		BEARING HOLDER (A)	1	

PARTS

RP 150YB

ITEM NO.	CODE NO.	DESCRIPTION	NO. USED	REMARKS
101		BALL BEARING 607VVCM	1	
102		MACHINE SCREW (W/WASHERS) M4 X 16	4	
103		MOTOR FRAME	1	

STANDARD ACCESSORIES

ITEM NO.	CODE NO.	DESCRIPTION	NO. USED	REMARKS
501	337519	MOLD PIPE	2	
502	337523	CREVICE NOZZLE	1	
503	337518	PIPE HOLDER	1	
504	337521	JOINT HANDLE	1	
505	320994	ADAPTER	1	
506	337527	JOINT (D)	1	
507	949554	NUT M4 (10 PCS.)	1	
508	337520	PIPE HANGER	1	
509	993539	MACHINE SCREW (W/WASHERS) M4 X 16	1	
510	337522	NOZZLE FOR FLUID	1	
511	326127	WET NOZZLE	1	
512	321984	BRUSH	1	
513	328099	POLYETHYLENE BAG (10 PCS.)	1	

OPTIONAL ACCESSORIES

ITEM NO.	CODE NO.	DESCRIPTION	NO. USED	REMARKS
601	338260	PAPER DUSTBAG SET (5 PCS.)	1	