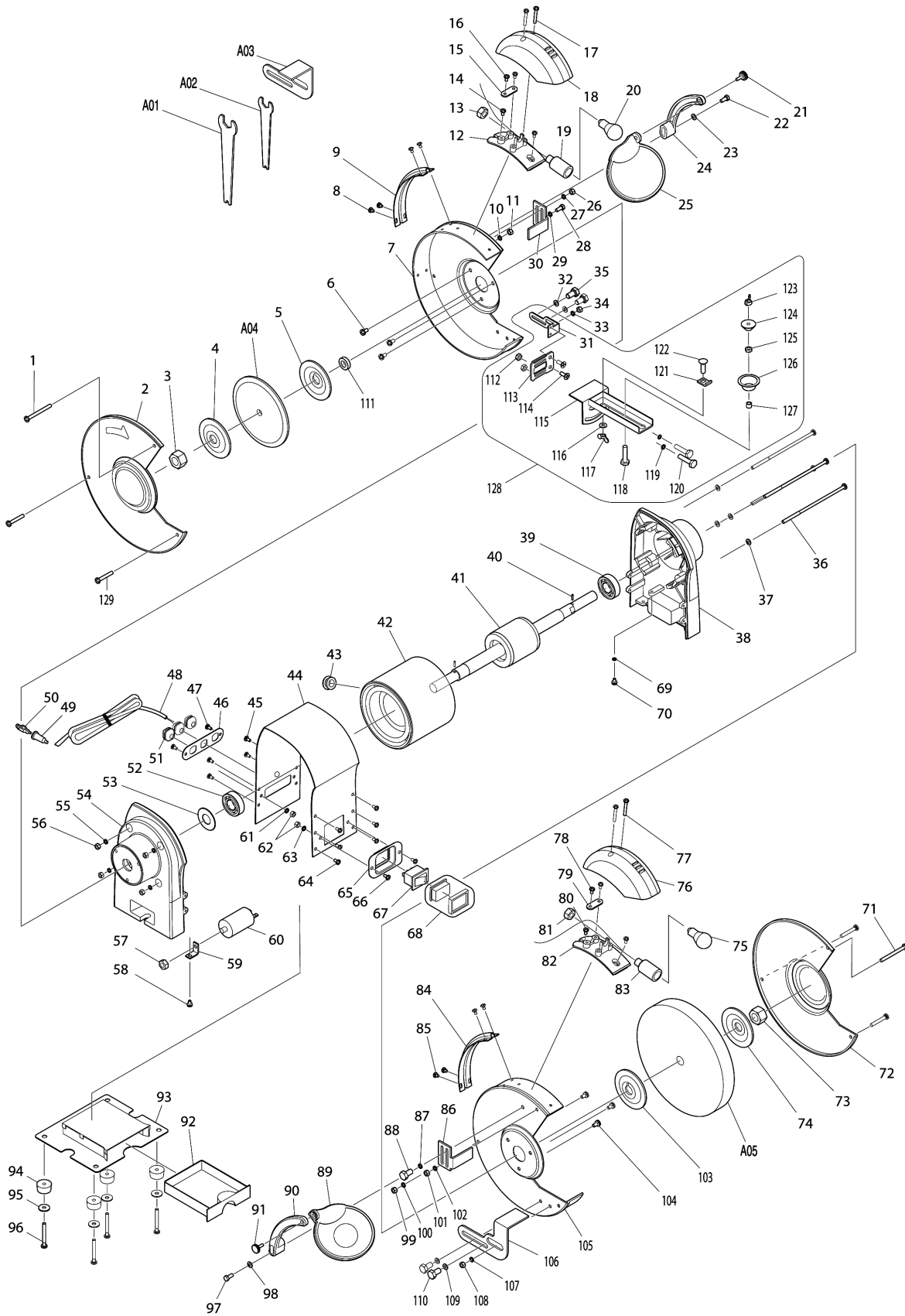


Model No.GB602W BENCH GRINDER 150MM



Model No.GB602W BENCH GRINDER 150MM

| Tétel | Cikkszám | Megnevezés | Átalakulás | Menny. | New/Old | Opc 1 | Opc 2 | Megjegyzés |
|-------|------------|------------------------------------|------------|--------|---------|-------|-------|------------|
| 001 | 911274-7 | PAN HEAD SCREW M5X50 | | 2 | | | | |
| 002 | AL00000201 | WHEEL COVER L(OUTER) CE | | 1 | | | | |
| 003 | AL00000003 | HEX NUT M12L | | 1 | | | | |
| 004 | AL00000004 | OUTER FLANGE | | 1 | | | | |
| 005 | AL00000005 | INNER FLANGE | | 1 | | | | |
| 006 | 911206-4 | TRAPÉZFEJŰ CSAVAR M5X10 911206 | | 3 | | | | |
| 007 | AL00000203 | WHEEL COVER L(INNER)(CE) | | 1 | | | | |
| 008 | 911107-6 | PAN HEAD SCREW M4X8 | | 4 | | | | |
| 009 | AL00000007 | CORD CLAMP | | 1 | | | | |
| 010 | 942101-7 | RUGÓS ALÁTÉT 5 942101-7 | | 1 | | | | |
| 011 | 931201-8 | HATLAPÚ ANYA M5 931201-8 | | 1 | | | | |
| 012 | AL00000008 | TARTÓ GB602 | | 1 | | | | |
| 013 | AL00000009 | NUT | | 1 | | | | |
| 014 | 911107-6 | PAN HEAD SCREW M4X8 | | 2 | | | | |
| 015 | AL00000010 | STRAIN RELIEF | | 1 | | | | |
| 016 | 911118-1 | TRAPÉZFEJŰ CSAVAR M4X12 911118 | | 2 | | | | |
| 017 | 911156-3 | TRAPÉZFEJŰ CSAVAR M4X30 911156 | | 2 | | | | |
| 018 | AL00000011 | LÁMPATEST | | 1 | | | | |
| 019 | AL00000012 | LÁMPA GB602 | | 1 | | | | |
| 020 | AL00000013 | BULB | | 1 | | | | |
| 021 | AL00000014 | ADJUSTABLE KNOB | | 1 | | | | |
| 022 | 921351-7 | HEX. BOLT M6X30 | | 1 | | | | |
| 023 | 941151-9 | LAPOS ALÁTÉT 6 941151-9* | | 1 | | | | |
| 024 | AL00000015 | KONZOL GB602 | | 1 | | | | |
| 025 | AL00000016 | ÁTLÁTSZÓ VÉDŐBURKOLAT GB602/801 | | 1 | | | | |
| 026 | 931201-8 | HATLAPÚ ANYA M5 931201-8 | | 1 | | | | |
| 027 | 942101-7 | RUGÓS ALÁTÉT 5 942101-7 | | 1 | | | | |
| 028 | 921212-1 | HATLAPFEJŰ CSAVAR M5X12 | | 1 | | | | |
| 029 | 942101-7 | RUGÓS ALÁTÉT 5 942101-7 | | 1 | | | | |
| 030 | AL00000017 | SPARK DEFLECTOR (LEFT) | | 1 | | | | |
| 031 | AL00000082 | TOOL REST HOLDER | | 1 | | | | |
| 032 | 941202-8 | LAPOS ALÁTÉT 8 941202-8 | | 2 | | | | |
| 033 | 942101-7 | RUGÓS ALÁTÉT 5 942101-7 | | 1 | | | | |
| 034 | 931201-8 | HATLAPÚ ANYA M5 931201-8 | | 1 | | | | |
| 035 | 921411-5 | HEX. BOLT M8X12 | | 2 | | | | |
| 036 | 265004-1 | PAN HEAD SCREW M5X135 | | 4 | * | | | |
| 036-1 | AL00000113 | SCREW M5X135 | O | 4 | | | | |
| 037 | 941101-4 | LAPOS ALÁTÉT 5 941101-4 | | 4 | | | | |
| 038 | AL00000019 | MOTOR HOUSING COVER R | | 1 | | | | |
| 039 | 211206-7 | GOLYÓSCSAPÁGY 6202LLB 211206-7 | | 1 | | | | |
| 040 | 951051-5 | HASÍTOTT CSAPSZEG 3-8 951051-5 | | 2 | | | | |

Model No.GB602W BENCH GRINDER 150MM

| Tétel | Cikkszám | Megnevezés | Átalakulás | Menny. | New/Old | Opc 1 | Opc 2 | Megjegyzés |
|-------|------------|-----------------------------------|------------|--------|---------|-------|-------|------------|
| 041 | AL00000215 | ROTOR | | 1 | * | | | |
| 041-1 | AL00000229 | ROTOR | S | 1 | | | | |
| 042 | AL00000185 | STATOR | | 1 | * | | | |
| 042-1 | AL00000228 | STATOR | S | 1 | | | | |
| 043 | AL00000022 | BUSH | | 1 | | | | |
| 044 | AL00000183 | MOTOR HOUSING | | 1 | | | | |
| 045 | 911113-1 | TRAPÉZFEJŰ CSAVAR M4X10 911113 | | 4 | | | | |
| 046 | AL00000192 | CORD CLIP PLATE(CE) | | 1 | | | | |
| 047 | 911113-1 | TRAPÉZFEJŰ CSAVAR M4X10 911113 | | 2 | | | | |
| 048 | AL00000152 | WIRE WITH PLUG | | 1 | | | | |
| 051 | AL00000026 | CORD GUARD | | 3 | | | | |
| 052 | 211206-7 | GOLYÓSCSAPÁGY 6202LLB 211206-7 | | 1 | | | | |
| 053 | AL00000027 | WAVE WASHER | | 1 | | | | |
| 054 | AL00000028 | MOTOR HOUSING COVER L | | 1 | | | | |
| 055 | 942101-7 | RUGÓS ALÁTÉT 5 942101-7 | | 4 | | | | |
| 056 | 931201-8 | HATLAPÚ ANYA M5 931201- 8 | | 4 | | | | |
| 057 | 931402-8 | HATLAPÚ ANYA M8 931402- 8* | | 1 | | | | |
| 058 | 911113-1 | TRAPÉZFEJŰ CSAVAR M4X10 911113 | | 1 | | | | |
| 059 | AL00000029 | CAPACITOR CLAMP | | 1 | | | | |
| 060 | AL00000095 | CAPACITOR | | 1 | | | | |
| 061 | 942051-6 | RUGÓS ALÁTÉT 4 942051-6 | | 2 | | | | |
| 062 | 931102-0 | HATLAPÚ ANYA M4 931102- 0* | | 4 | | | | |
| 063 | 942051-6 | RUGÓS ALÁTÉT 4 942051-6 | | 2 | | | | |
| 064 | 911113-1 | TRAPÉZFEJŰ CSAVAR M4X10 911113 | | 6 | | | | |
| 065 | AL00000031 | SWITCH BOARD | | 1 | | | | |
| 066 | 911113-1 | TRAPÉZFEJŰ CSAVAR M4X10 911113 | | 2 | | | | |
| 067 | AL00000032 | SWITCH ASSY COVER | | 1 | * | | | |
| 067-1 | AL00000168 | SWITCH WITH COVER | < | 1 | | | | |
| 068 | AL00000033 | SWITCH COVER ASSY | | 1 | * | | | |
| 069 | AL00000134 | TOOTHED LOCK WASHER 4 | | 1 | | | | |
| 070 | 911113-1 | TRAPÉZFEJŰ CSAVAR M4X10 911113 | | 1 | | | | |
| 072 | AL00000218 | WHEEL COVER R | | 1 | | | | |
| 073 | AL00000035 | HEX NUT M12 | | 1 | | | | |
| 074 | AL00000004 | OUTER FLANGE | | 1 | | | | |
| 075 | AL00000013 | BULB | | 1 | | | | |
| 076 | AL00000011 | LÁMPATEST | | 1 | | | | |
| 077 | 911156-3 | TRAPÉZFEJŰ CSAVAR M4X30 911156 | | 2 | | | | |
| 078 | 911118-1 | TRAPÉZFEJŰ CSAVAR M4X12 911118 | | 2 | | | | |
| 079 | AL00000010 | STRAIN RELIEF | | 1 | | | | |
| 080 | 911107-6 | PAN HEAD SCREW M4X8 | | 2 | | | | |
| 081 | AL00000009 | NUT | | 1 | | | | |

Please order the parts with part number.

Print Date 2020/11/16

Model No.GB602W BENCH GRINDER 150MM

| Tétel | Cikkszám | Megnevezés | Átalakulás | Menny. | New/Old | Opc 1 | Opc 2 | Megjegyzés |
|-------|------------|-----------------------------------|------------|--------|---------|-------|-------|------------|
| 082 | AL00000008 | TARTÓ GB602 | | 1 | | | | |
| 083 | AL00000012 | LÁMPA GB602 | | 1 | | | | |
| 084 | AL00000007 | CORD CLAMP | | 1 | | | | |
| 085 | 911107-6 | PAN HEAD SCREW M4X8 | | 4 | | | | |
| 086 | AL00000036 | SPARK DEFLECTOR (RIGHT) | | 1 | | | | |
| 087 | 942101-7 | RUGÓS ALÁTÉT 5 942101-7 | | 1 | | | | |
| 088 | 921212-1 | HATLAPFEJŰ CSAVAR M5X12 | | 1 | | | | |
| 089 | AL00000037 | VÉDŐPLEXI NAGYÍTÓS | | 1 | | | | |
| 090 | AL00000038 | KONZOL JOBB GB602 | | 1 | | | | |
| 091 | AL00000014 | ADJUSTABLE KNOB | | 1 | | | | |
| 092 | AL00000039 | COOLANT TRAY | | 1 | | | | |
| 093 | AL00000040 | COOLANT TRAY PLATE ASSY | | 1 | | | | |
| 094 | AL00000041 | RUBBER SLEEVE | | 4 | | | | |
| 095 | 941051-3 | LAPOS ALÁTÉT 4 941051-3 | | 4 | | | | |
| 096 | 911121-2 | TRAPÉZFEJŰ CSAVAR M4X14 911121 | | 4 | | | | |
| 097 | 921351-7 | HEX. BOLT M6X30 | | 1 | | | | |
| 098 | 941151-9 | LAPOS ALÁTÉT 6 941151- 9* | | 1 | | | | |
| 099 | 931201-8 | HATLAPÚ ANYA M5 931201- 8 | | 1 | | | | |
| 100 | 942101-7 | RUGÓS ALÁTÉT 5 942101-7 | | 1 | | | | |
| 101 | 931201-8 | HATLAPÚ ANYA M5 931201- 8 | | 1 | | | | |
| 102 | 942101-7 | RUGÓS ALÁTÉT 5 942101-7 | | 1 | | | | |
| 103 | AL00000005 | INNER FLANGE | | 1 | | | | |
| 104 | 911206-4 | TRAPÉZFEJŰ CSAVAR M5X10 911206 | | 3 | | | | |
| 105 | AL00000207 | WHEEL COVER R(INNER) | | 1 | | | | |
| 106 | AL00000043 | WORK REST (RIGHT) | | 1 | | | | |
| 107 | 942101-7 | RUGÓS ALÁTÉT 5 942101-7 | | 1 | | | | |
| 108 | 931201-8 | HATLAPÚ ANYA M5 931201- 8 | | 1 | | | | |
| 109 | 941202-8 | LAPOS ALÁTÉT 8 941202-8 | | 2 | | | | |
| 110 | 921411-5 | HEX. BOLT M8X12 | | 2 | | | | |
| 111 | AL00000001 | SLEEVE | | 1 | | | | |
| 112 | 931301-4 | HATLAPÚ ANYA M6 931301- 4 | | 2 | | | | |
| 113 | AL00000047 | TOOL REST HOLDER | | 1 | | | | |
| 114 | AL00000048 | +COUNTERSUNK HEAD SCREW M6X | | 2 | | | | |
| 115 | AL00000049 | TOOL REST | | 1 | | | | |
| 116 | AL00000050 | FLAT WASHER 10 | | 1 | | | | |
| 117 | 934401-9 | WING NUT M8 | | 1 | | | | |
| 118 | 921362-2 | HATLAPFEJŰ CSAVAR M6X40 | | 1 | | | | |
| 119 | 942151-2 | RUGÓS ALÁTÉT 6 942151- 2* | | 2 | | | | |
| 120 | 921362-2 | HATLAPFEJŰ CSAVAR M6X40 | | 2 | | | | |
| 121 | AL00000051 | STOPPER | | 1 | | | | |

Model No.GB602W BENCH GRINDER 150MM

| Tétel | Cikkszám | Megnevezés | Átalakulás | Menny. | New/Old | Opc 1 | Opc 2 | Megjegyzés |
|-------|------------|-----------------------------------|------------|--------|---------|-------|-------|------------|
| 122 | AL00000052 | CAP SQUARE NECK BOLT M8X20 | | 1 | | | | |
| 123 | 934301-3 | SZÁRNYAS ANYA M6 4105KB/5600RD | | 1 | | | | |
| 124 | AL00000053 | HOLDER A | | 1 | | | | |
| 125 | 931301-4 | HATLAPÚ ANYA M6 931301- 4 | | 1 | | | | |
| 126 | AL00000054 | HOLDER B | | 1 | | | | |
| 127 | AL00000055 | SPACER | | 1 | | | | |
| 128 | A-47531 | FŰRÉSZLAP-ÉLEZŐ KÉSZLET | | 1 | | | | |
| D10 | | INC. 31,112-127 | | | | | | |
| 129 | 911267-4 | PAN HEAD SCREW M5X45 | | 4 | | | | |
| A01 | AL00000044 | WRENCH 10-13 | | 1 | | | | |
| A02 | AL00000045 | WRENCH 8-19 | | 1 | | | | |
| A03 | A-47195 | T2 KÖSZÖRŰKORONG A60 150MM | | 1 | | | | |
| A04 | A-47210 | T2 KÖSZÖRŰKORONG WA60 150MM | | 1 | * | | | |
| A04-1 | B-51926 | GRINDING WHEEL (BENCH,150) | < | 1 | | | | |
| F01 | AL00000147 | SAFETY GOGGLES | | 1 | | | | |

Please order the parts with part number.

Print Date 2020/11/16